

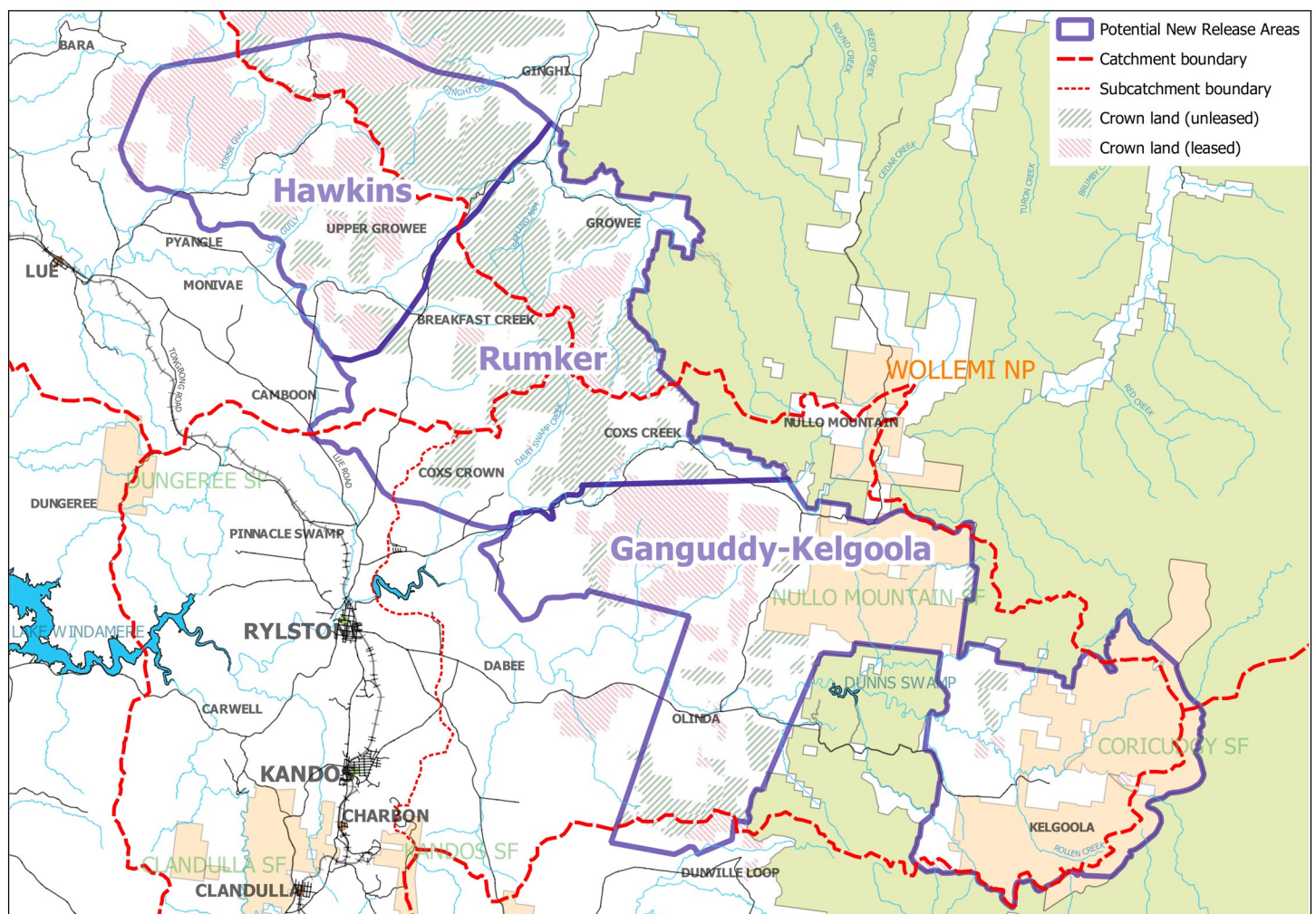
RYLSTONE REGION UNDER THREAT

Who we are and why we are contacting you

The NSW Government is about to commence the Preliminary Regional Issues Assessment (PRIA) for coal exploration in the Hawkins and Rumker areas around Rylstone. Ganguddy-Kelgoola will be next (see maps below). This is the first step in issuing coal exploration licences.

We are the “Rylstone Region Coal Free Community” (RRCFC), a local community group concerned that new coal mining in our region will damage our agriculture and thriving tourism industries, destroy heritage sites and precious water supplies, and adversely affect our health.

We are contacting you as you are either a local resident whose property is under direct threat of coal exploration, or you are a resident or business owner that will be close to any new mines.



Busting myths

➤ *It's never going to happen here*

False. The PRIA, the first step in the process is already happening. There are coal reserves in this area and there will be interest from multi-national companies.

➤ *RRCFC want to shut down coal mines*

False. While existing coal mines should run their course, there is already insufficient demand to have mines operating at full capacity. If the current mines are underutilised and there are enough existing coal resources approved to meet the next 30 years of demand, why open more?

Busting myths cont.

➤ **Coal mines create lots of new jobs for communities**

False. Mining is a specialist industry. People with the skills tend to follow the mines and very few additional local jobs are created¹. Like many industries, mining is also becoming more automated, requiring fewer people².

➤ **Coal mines generate a lot of money**

True. Mines do typically provide a flow of revenue to governments and their (mostly foreign) owners, however, the flow on to local businesses and local communities is not automatic and generally is not seen¹. The revenue streams should be unpacked so people clearly see where the money flows.

➤ **I live in town, and my property isn't under threat of mining, so it doesn't affect me**

False. The entire region will be impacted. Air, water, soil and noise pollution do not stay within the boundaries of the coal mining sites. Much of the Rylstone Dam catchment lies within the area covered by the proposed exploration licenses. These water supplies also feed into Mudgee. Once our water and soil are lost, we can't get them back. The tourism industry is booming in our region. People don't come here to see coal mines. Along with environmental impacts, research shows mines can be associated with increased rates of alcohol and drug abuse, violence, sexual assaults and other crimes in adjoining communities^{1,3,4}. Additionally, the high wages miners receive can drive up the cost of living, especially housing, to levels locals can no longer afford³. Finally, once the mines close, the local towns close as they no longer have the income from the miners they were dependent on.

➤ **Coal demand is increasing**

False. The Reserve Bank of Australia anticipates international thermal coal demand to decline in the long-term as renewable electricity generation becomes more viable⁵. In its Strategic Statement on Coal Exploration and Mining in NSW released in June 2020, the NSW Government describes one of its four actions is supporting diversification of coal-reliant regional economies to assist with the phase-out of thermal coal mining⁵.

➤ **I am one person, I can't do anything**

False. Every single voice matters – we can all have an impact. The more that we come together, the louder our voice. Our community needs everyone to stand up now, as it will happen if we don't all help stop it. People can contribute to the fight in lots of different ways, from putting up signs in their front windows or on their gates, to increasing awareness by assisting RRCFC with their activities, by voicing their objection to their State Parliament Members, and/or making a submission to the PRIA (RRCFC are more than happy to assist you and have templates you can use).

Where can I get more information on the PRIA?

- **Rylstone Region Coal Free Community:** www.rylstonecfc.com
- **Lock the Gate:** info@lockthegate.org.au
- **NSW Govt: web -** www.planning.nsw.gov.au/Assess-and-Regulate/Development-Assessments/Preliminary-Regional-Issues-Assessment
email: pria@planning.nsw.gov.au **ph:** 1300 305 695

I'd like to become more involved with RRCFC, how do I do that?

✉ info@rylstonecfc.com

f www.facebook.com/rylstonecfc/

🐦 @NoCoalRylstone



**Check our website regularly for developments and critical information
and join the RRCFC mailing list for updates**

1. Power Consulting Incorporated. The social costs of mining. Power Consulting Incorporated: Missoula, Montana; 2019

2. Markman J. These Are the Robots That Will Mine In Hell. Forbes. July 14, 2017. <https://www.forbes.com/sites/jonmarkman/2017/07/14/these-are-the-robots-that-will>

3. Carrington K. The resource boom's underbelly: Criminological impacts of mining development. Australian and New Zealand Journal of Criminology. 2011; doi.org/10.1177/0004865811419068

4. Jayasundara D, Heitkamp T, Mayzer R et al. 2016. Exploratory Research on the Impact of the Growing Oil Industry in North Dakota and Montana on Domestic Violence, Dating Violence, Sexual Assault, and Stalking: A Final Summary Overview. National Institute of Justice Award Number 2013-ZD-CX-0072.

5. McCarthy P. Transitioning communities dependent on coal mining in NSW Briefing Paper No 1/2021. NSW Wales Parliamentary Research Service: Sydney, Australia.